



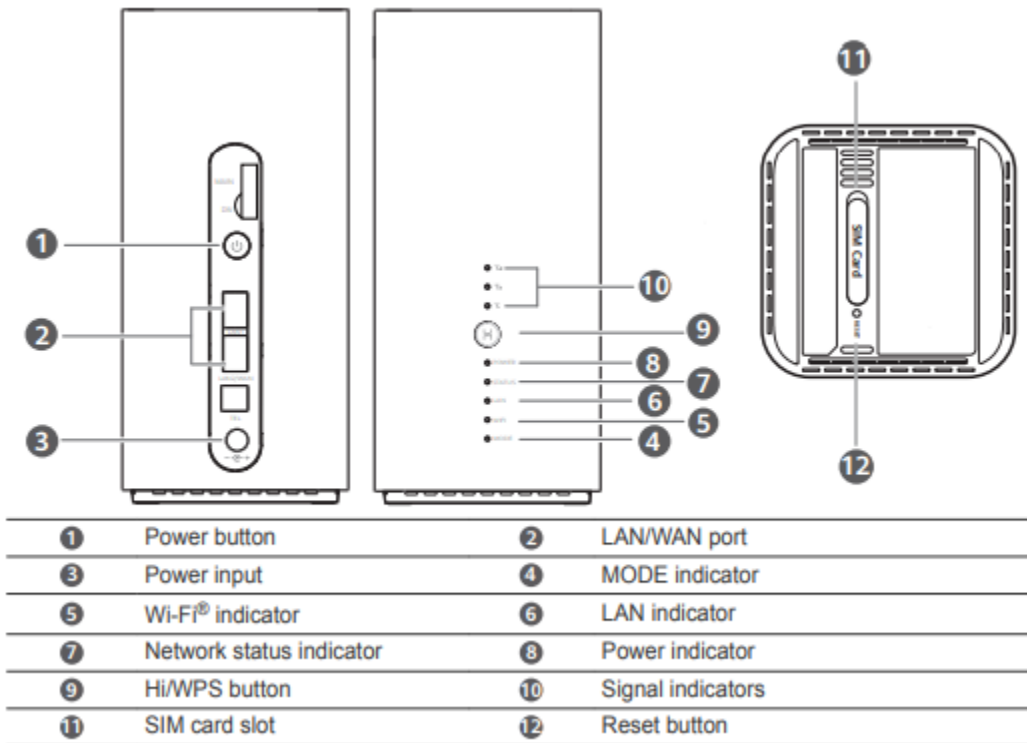
Huawei B818

Home Wireless Broadband User Guide



TANGERINE
TELECOM

Product Overview

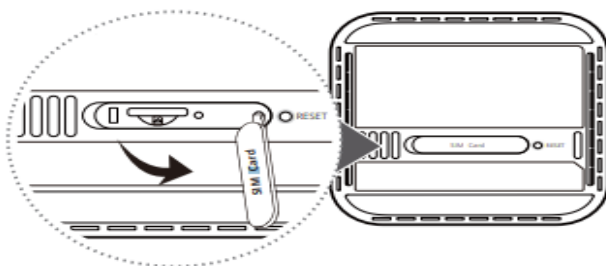


Setup

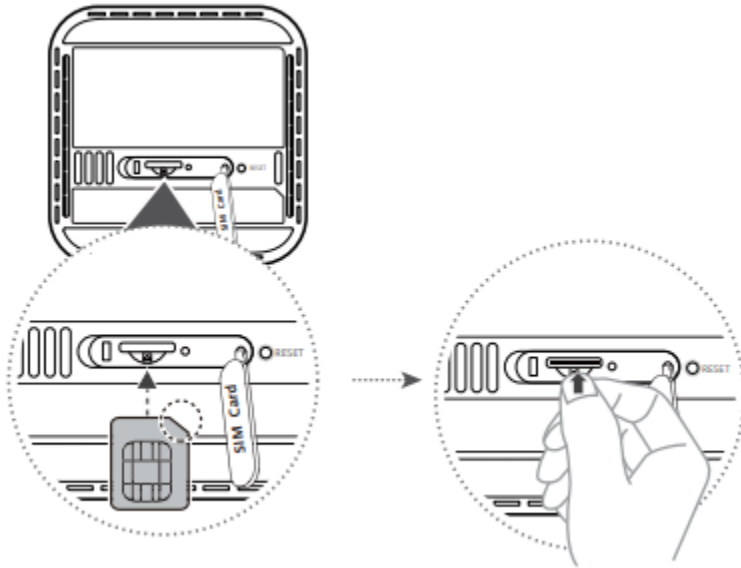
1. Make sure you use the correct SIM card.



2. Open the SIM card cover.



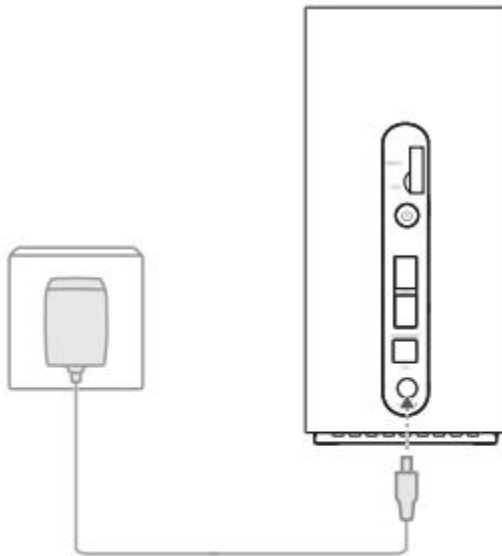
3. Insert the SIM card gently into the SIM card slot in the direction shown in the figure below until it clicks. Then close the SIM card cover.



To remove the SIM card, gently press the SIM card in until it clicks. The card will automatically pop out.

Do not insert or remove a SIM card when the router is running, as this may affect performance or damage the SIM card.


4. Connect the power adapter to the router.



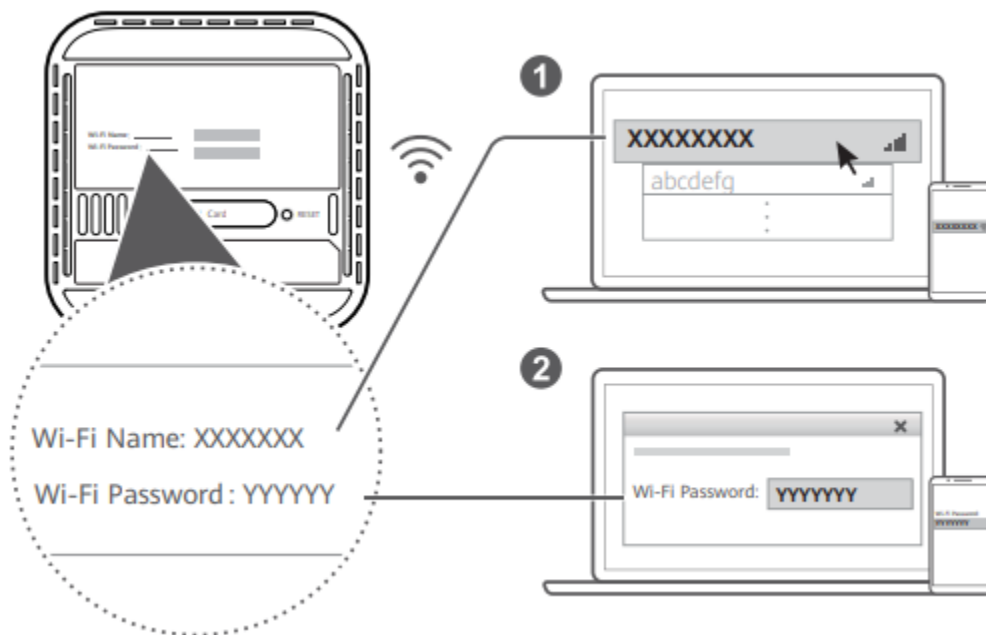
The indicators will turn on when the router has successfully connected to a network.

MODE indicator Cyan/blue: Connected to an LTE/3G network.

Signal indicators Green: signal reception available (more indicators mean better reception).

 If the MODE indicator is red, it indicates there is no network connection. Please refer to the FAQs in this guide.

Connecting to your router's Wi-Fi network



Once the router has connected to a mobile data network, you can connect your computer or mobile phone to the router's Wi-Fi network to access the Internet. Please refer to the label on the bottom of the router for the default Wi-Fi network name (Wi-Fi Name) and password (Wi-Fi Password).

- When the Wi-Fi indicator is steady on, Wi-Fi is enabled. To enable or disable Wi-Fi, refer to the router's web-based management page.
- Ensure that you promptly change the Wi-Fi network name and password on the web-based management page to prevent unauthorized access to your Wi-Fi network. Once you have changed the password, you will need to reconnect to the router's Wi-Fi network.

Managing your router

You can manage the router using the web-based management page. Please refer to the label on the bottom of the router for the default IP address, password and so on. More information can be found in the web-based management page.

- Ensure that you promptly change the default login password for the web-based management page to prevent unauthorized users from changing the router's settings.
- You can also manage your router using the HUAWEI SmartHome app. Scan the QR code below to download.

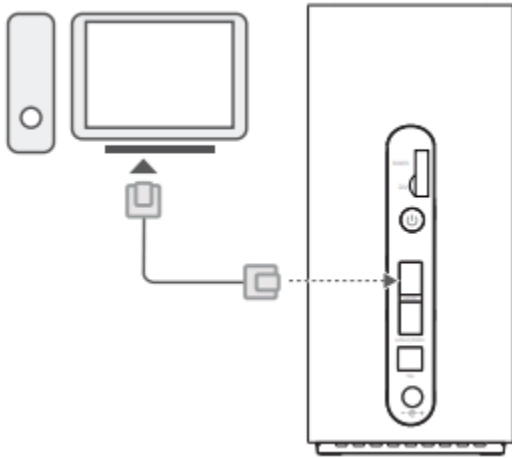


Optional configurations

The features described in this section are for reference purposes only. Your router may not support all these features.

Connecting computer

You can connect a computer to the router to access the Internet. You can use an Ethernet cable to connect a machine/computer from the Huawei B818 Router.



Frequently asked questions

How do I restore factory settings?

When the router is turned on, press the Reset button for approximately 3 seconds using a pointed object until the power indicator turns off. Restoring factory settings will restore the settings to the default. You can reconfigure them after the router is restored.

What should I do if I forgot the Wi-Fi password or the login password for the web-based management page?

Restore the router to its factory settings and then use the default Wi-Fi password and login password to try again.

What should I do if the MODE indicator is red or an Internet connection cannot be established?

1. Check if the SIM card is inserted. Refer to the Setup section for the right size of SIM card and the right way to insert it into the slot.
2. If the issue persists, restore the router to factory settings and try again.
3. Contact our Technical support team at 1800 211 112 to check if the SIM card is out of service or if it is a new card, to make sure that it is activated.

What should I do if the Internet speed is slow?

1. Check the signal indicators on the router. If it shows weak signal, adjust the router's direction or move it close to a window to improve signal reception.
2. If your device is connected to the router over Wi-Fi, adjust your device's position to receive better signal.
3. Switch to Wi-Fi 5 GHz if it is supported by your device.
4. Restart the router and your device and try again.
5. If the issue persists, please call our Technical team at 1800 211 112.

How can I connect to the router using WPS (Wi-Fi Protected Setup)?

To connect a WPS-enabled device to your router using the Hi/WPS button:

1. Press and hold the Hi/WPS button on the router for at least 1 second and then release, the Wi-Fi indicator starts to blink.
2. Enable WPS on your device within 2 minutes to connect to the router's Wi-Fi network.

Why can't I access the router's web-based management page?

1. Ensure that your computer is connected to the router through an Ethernet cable or Wi-Fi.
2. Ensure that your computer is set to obtain an IP address and DNS server address automatically.
3. Restart your browser or try using another browser.
4. If the problem persists, restore the router to its factory settings.

Why is the content displayed on the web-based management page not up to date?

Depending on your browser's cache, the content for your device on the web-based management page may not be up to date. Manually clear your browser's cache (for example, open your browser and choose **Internet Options > General > Browsing history > Delete.**) and re-launch the web-based management page.

Does my router support 5 GHz Wi-Fi? How do I connect to its 5 GHz Wi-Fi?

1. Yes. Your router supports 5 GHz Wi-Fi, which is faster and less sensitive to interference. However, it does not penetrate walls as well as 2.4 GHz Wi-Fi and can only be used on devices that support 5 GHz Wi-Fi.
2. If you have enabled the feature that prioritizes 5 GHz on your router, the 2.4 GHz and 5 GHz networks will share the same network name and you will be automatically connected to the faster network. If this feature is disabled, two Wi-Fi network names will be displayed. Connect to the Wi-Fi network ending with "_5G". You can manage this feature in your router's web-based management page.

If you are experiencing any other issues with the router:

1. Restart the router.
2. Restore the router to its factory settings.
3. Contact our Technical team at 1800 211 112.